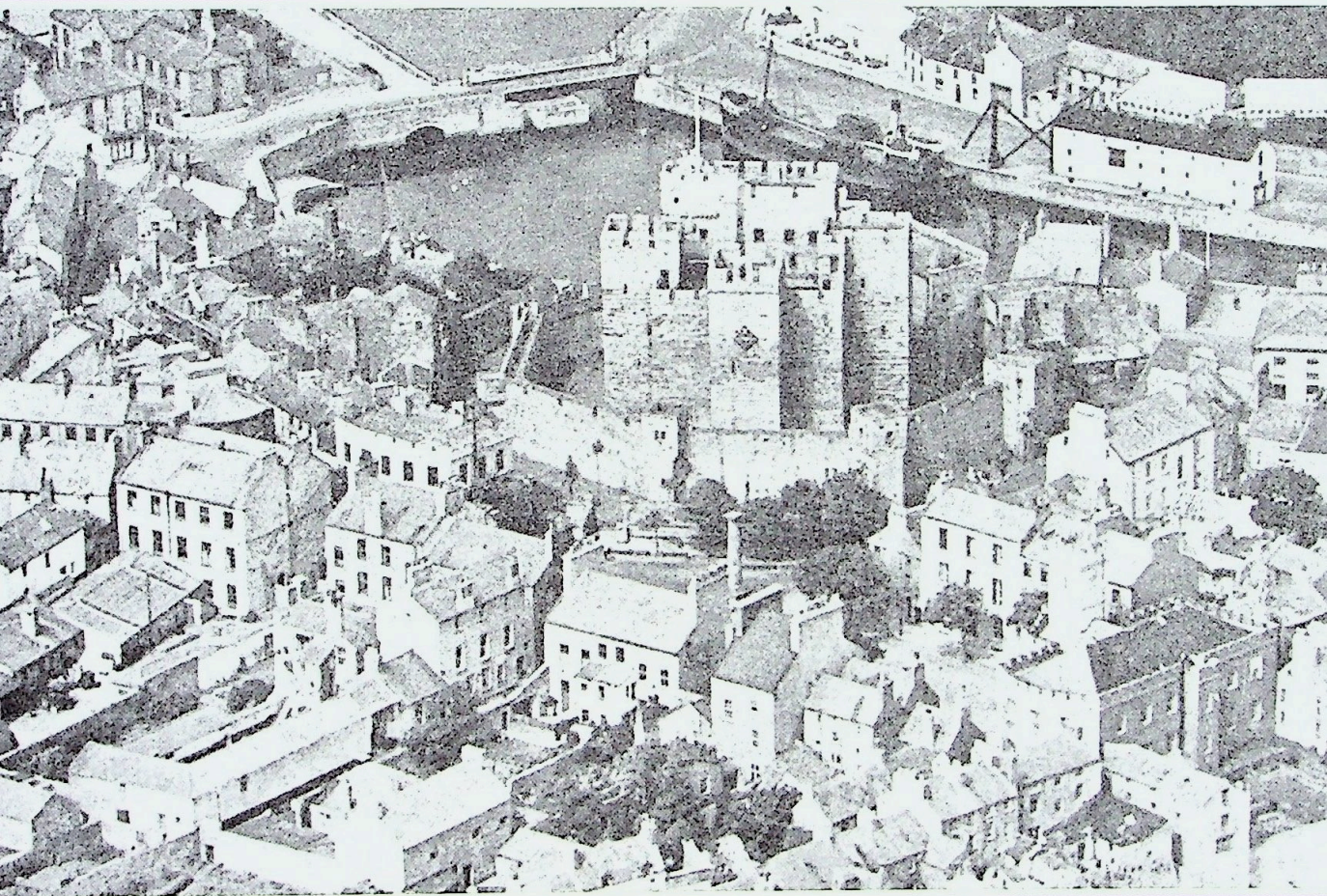


Scottish Studies

Volume 20 : 1976



UNIVERSITY OF EDINBURGH

Scottish Studies

*The Journal of the School of Scottish Studies
University of Edinburgh*

20

1976

SCHOOL OF SCOTTISH STUDIES
UNIVERSITY OF EDINBURGH

Editorial Advisory Board

G. Donaldson
K. H. Jackson
K. L. Little
J. Littlejohn
A. McIntosh
J. MacQueen
B. R. S. Megaw
D. Murison
S. Piggott
J. W. Watson

Editor

J. MacQueen

Associate Editor

B. R. S. Megaw

Assistant Editor

D. J. Hamilton

Material quoted from the archives of the School of Scottish Studies is copyright and may not be reproduced in any form without the permission of the Director.

PRINTED IN GREAT BRITAIN AT
THE UNIVERSITY PRESS
ABERDEEN

Scottish Studies

VOLUME 20

- I BASIL MEGAW Norseman and Native in the Kingdom of the Isles. A Re-assessment of the Manx Evidence
- 45 MARY ELLEN B. LEWIS 'The joy of my heart': Robert Burns as Folklorist
- 69 JOHN MACQUEEN Neoplatonism and Orphism in Fifteenth-Century Scotland. The Evidence of Henryson's *New Orpheus*
- 91 AILIE MUNRO 'Abbotsford Collection of Border Ballads': Sophia Scott's Manuscript Book with Airs

Notes and Comments

- 109 G. WHITTINGTON, C. J. CASELDINE & N. Q. BOGDAN A Discovery of Mediæval Plough-Marks in St Andrews
- 117 W. A. J. PREVOST Joseph Train's Letter to Sir Walter Scott concerning Wandering Willie
- 124 PATRICK SHULDHAM-SHAW The Ballad 'King Orfeo'
- 127 PATRICK SHULDHAM-SHAW Professor T. M. Flett (28 July 1923–13 February 1976)

Plates

opp. pages

- I PLATE I Castle Rushen: the twelfth-century headquarters of the Manx Kings of the Isles
- 98 PLATE II Title and first line of three songs from Sophia Scott's Manuscript
- 99 PLATE III *Brown Robin*. Part of a page from Sophia Scott's Manuscript
- 109 PLATE IV The plough marks as revealed in the northern face of Trench B

Contributors to this Volume

BASIL MEGAW BA

Senior Lecturer, School of Scottish Studies, University of Edinburgh

MARY ELLEN B. LEWIS MA, PHD

Assistant Professor, Folklore Institute, Indiana University

JOHN MACQUEEN MA

Professor, School of Scottish Studies, University of Edinburgh

AILIE MUNRO MA, BMUS

Lecturer, School of Scottish Studies, University of Edinburgh

G. WHITTINGTON BA, PHD

Senior Lecturer, Department of Geography, University of St Andrews

C. J. CASELDINE MA

Lecturer, Department of Geography, University of Exeter

N. G. BOGDAN BA

Director of Perth High Street Excavation

MAJOR W. A. J. PREVOST

26 Coates Gardens, Edinburgh

PATRICK SHULDHAM-SHAW MA

Honorary Fellow of the Institute for Advanced Studies in the Humanities, University of Edinburgh