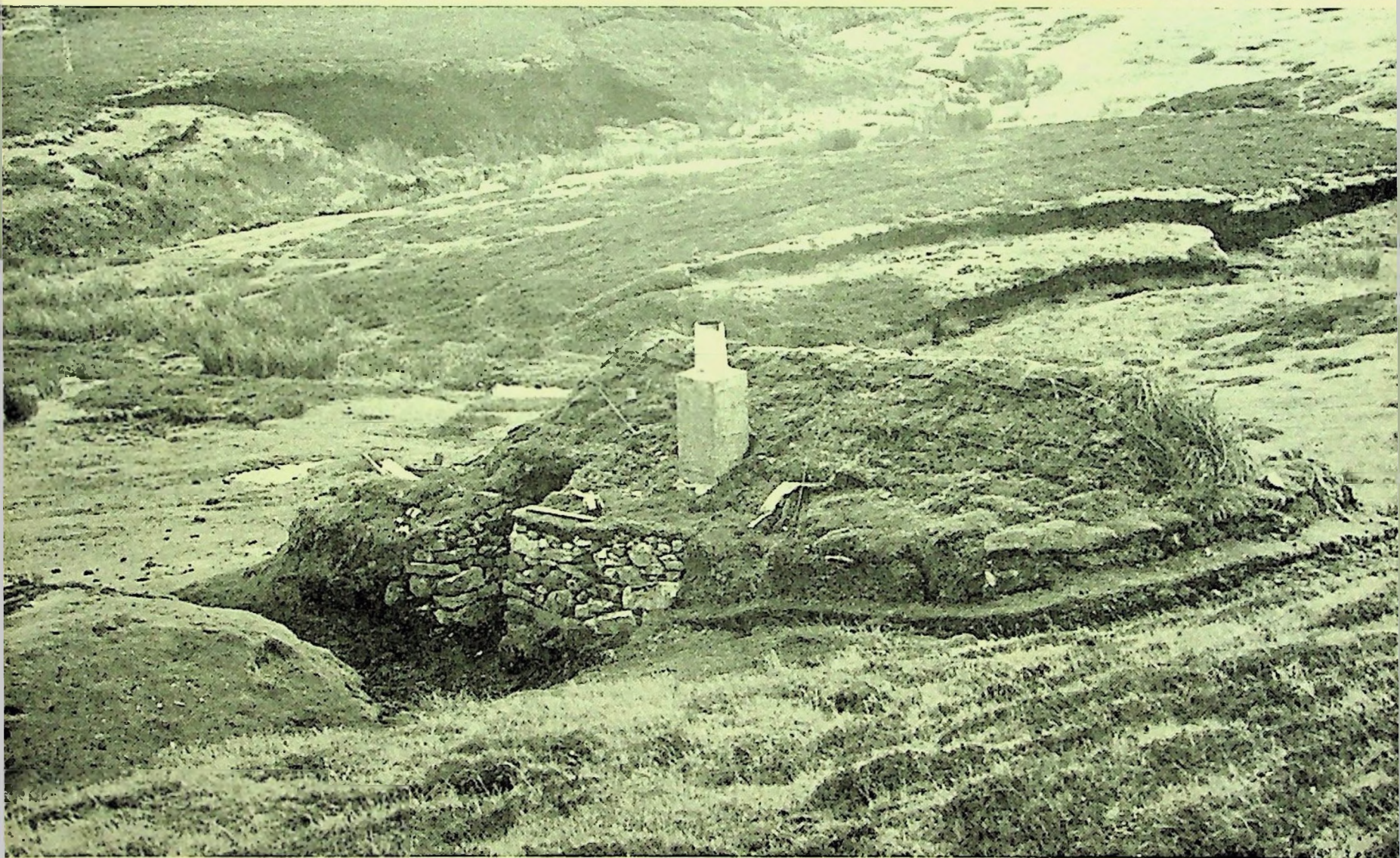


Scottish Studies

Volume 11 : 1967

part two



An occupied traditional shieling hut near the Butt of Lewis

UNIVERSITY OF EDINBURGH

Scottish Studies

*The Journal of the School of Scottish Studies
University of Edinburgh*

II

PART TWO

1967

OLIVER & BOYD LTD
FOR THE SCHOOL OF SCOTTISH STUDIES
UNIVERSITY OF EDINBURGH

Editorial Advisory Board

K. H. Jackson
K. L. Little
A. McIntosh
B. R. S. Megaw
S. T. M. Newman
W. F. H. Nicolaisen
S. Piggott
J. W. Watson

Editor

B. R. S. Megaw

Assistant Editor

D. J. Hamilton

PRINTED IN GREAT BRITAIN AT
THE UNIVERSITY PRESS
ABERDEEN

Scottish Studies

VOLUME II PART 2

- 125 The Scottish Country Dance. Its Origins and Development. II
J. F. & T. M. FLETT
- 149 An Old Highland Parish Register. Survivals of Clanship and Social Change in
Laggan, Inverness-shire, 1775-1854. I
ALAN G. MACPHERSON
- 193 Land Use by Summer Shielings
RONALD MILLER

Notes on Collection and Research

- 223 Scottish Place Names: 29 Scandinavian Personal Names in the Place Names of S.E. Scotland
W. F. H. NICOLAISEN
- 237 The Lone Highlander HAMISH HENDERSON
- 239 Each a'Mhinisteir DONALD A. MACDONALD
- 241 Analytical Aspects of 'The Conundrum' JAMES PORTER

Book Reviews

- 247 *Pale Hecate's Team* by K. M. Briggs ANNE ROSS
- 248 *Pagan Celtic Britain* by Anne Ross CHARLES THOMAS
- 251 Robert Kerr (1889-1967) B. R. S. MEGAW
- 252 Scottish Studies in 1966. An Annual Bibliography W. F. H. NICOLAISEN
- 265 Index

Contributors to this Issue

J. F. AND T. M. FLETT

T. M. Flett PHD, SCD, Professor of Pure Mathematics,
University of Sheffield

ALAN G. MACPHERSON MA

Assistant Professor of Geography,
and Director of Geographical Research,
Institute of Social and Economic Research,
Memorial University of Newfoundland

RONALD MILLER MA, PHD

Professor of Geography, University of Glasgow

W. F. H. NICOLAISEN DRPHIL, BLITT

Reader, School of Scottish Studies

HAMISH HENDERSON MA

Lecturer, School of Scottish Studies

DONALD A. MACDONALD MA

Lecturer, School of Scottish Studies

JAMES PORTER MA

Assistant Lecturer, School of Scottish Studies

ANNE ROSS MA, PHD

7 Bradstock Road, Stoneleigh, Epsom, Surrey

CHARLES THOMAS MA

Professor of Archaeology, University of Leicester